

# PUBLIC INFORMATION CENTRE

**Wednesday, April 2, 2025  
6 pm - 8 pm**

**Welcome! Please Sign In.**

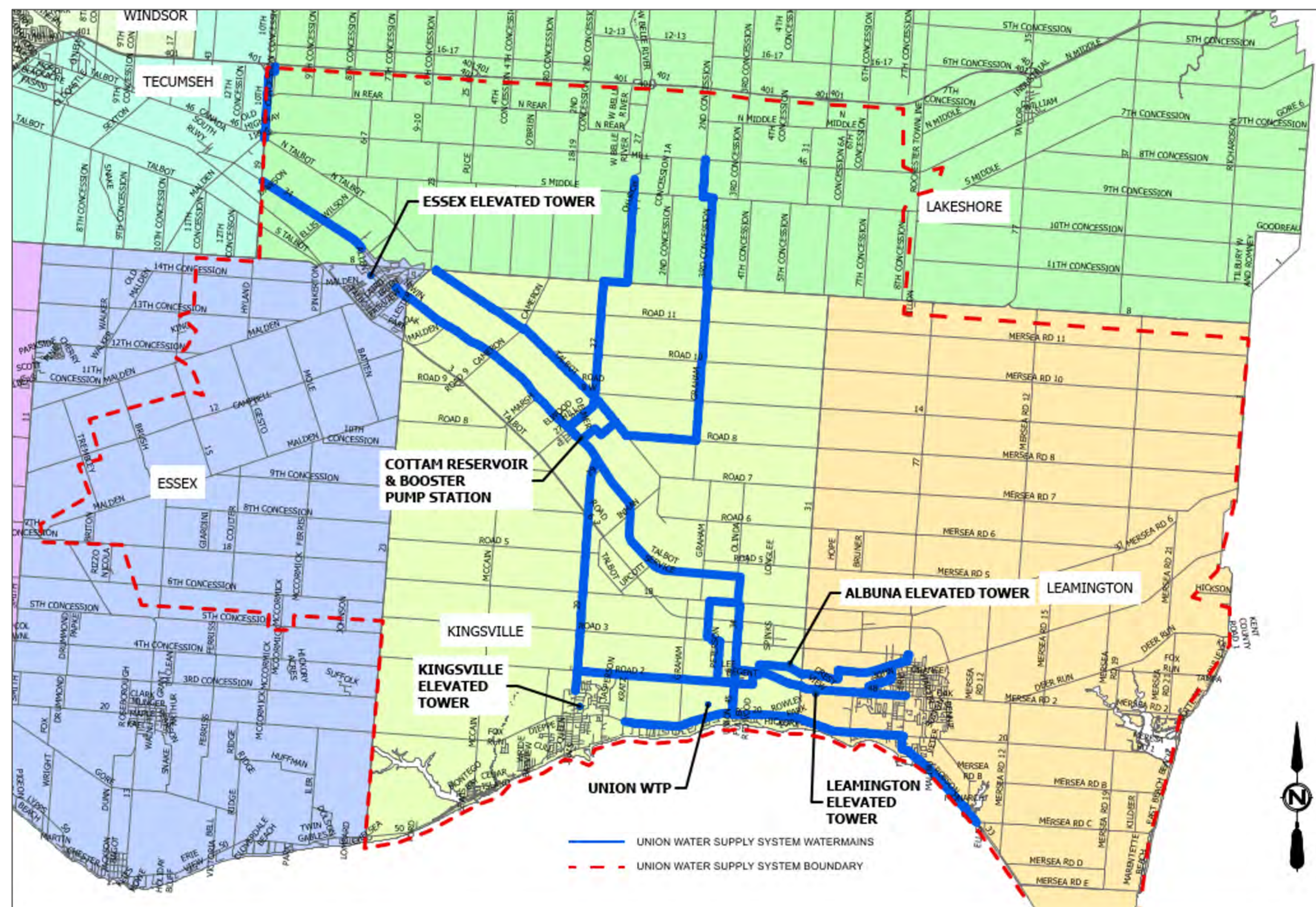
**Thank You for Attending!**

Would you like to stay informed on this project? Visit our website:  
[www.unionwater.ca/news-alerts-studies/projects](http://www.unionwater.ca/news-alerts-studies/projects)



## PROJECT BACKGROUND

The Ruthven WTP, owned by UWSS, provides drinking water to the towns of Kingsville and Essex, and to the Municipalities of Lakeshore and Leamington





## PROJECT GOALS

### Future Proofing Water Supply

To accommodate projected growth and water demand increases over the next 10 years

### Enhance Storage for Reliability

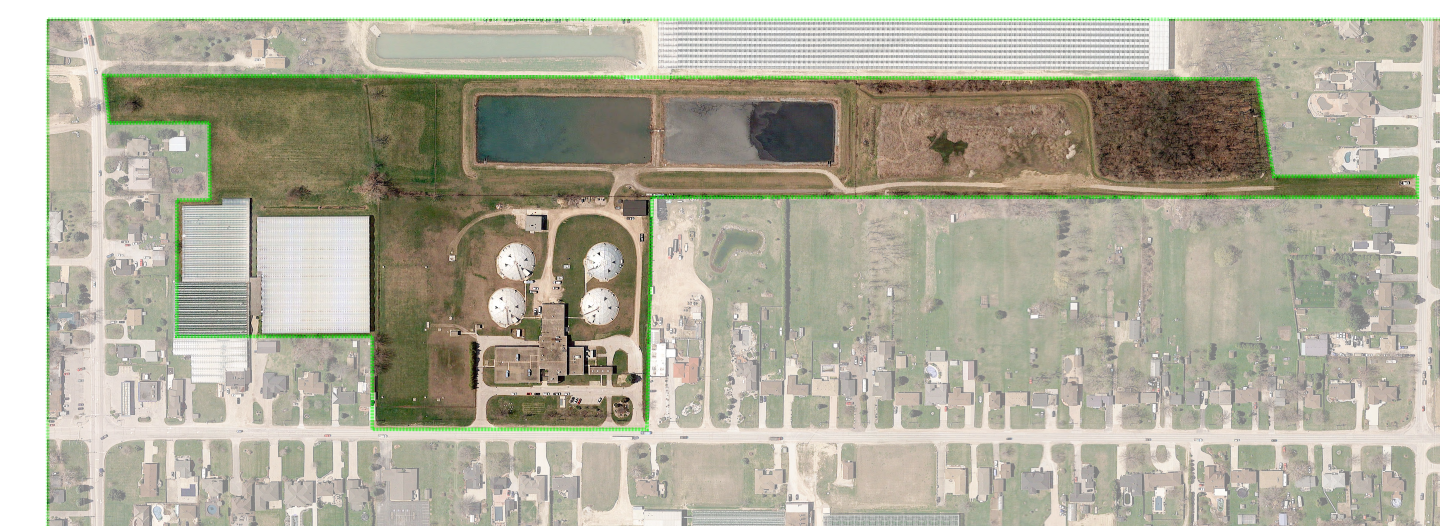
To provide on-site storage for consistent and reliable supply to the drinking water system even during peak demand

### Proactive and Flexible Operations

To reduce operational stress and improve water system flexibility

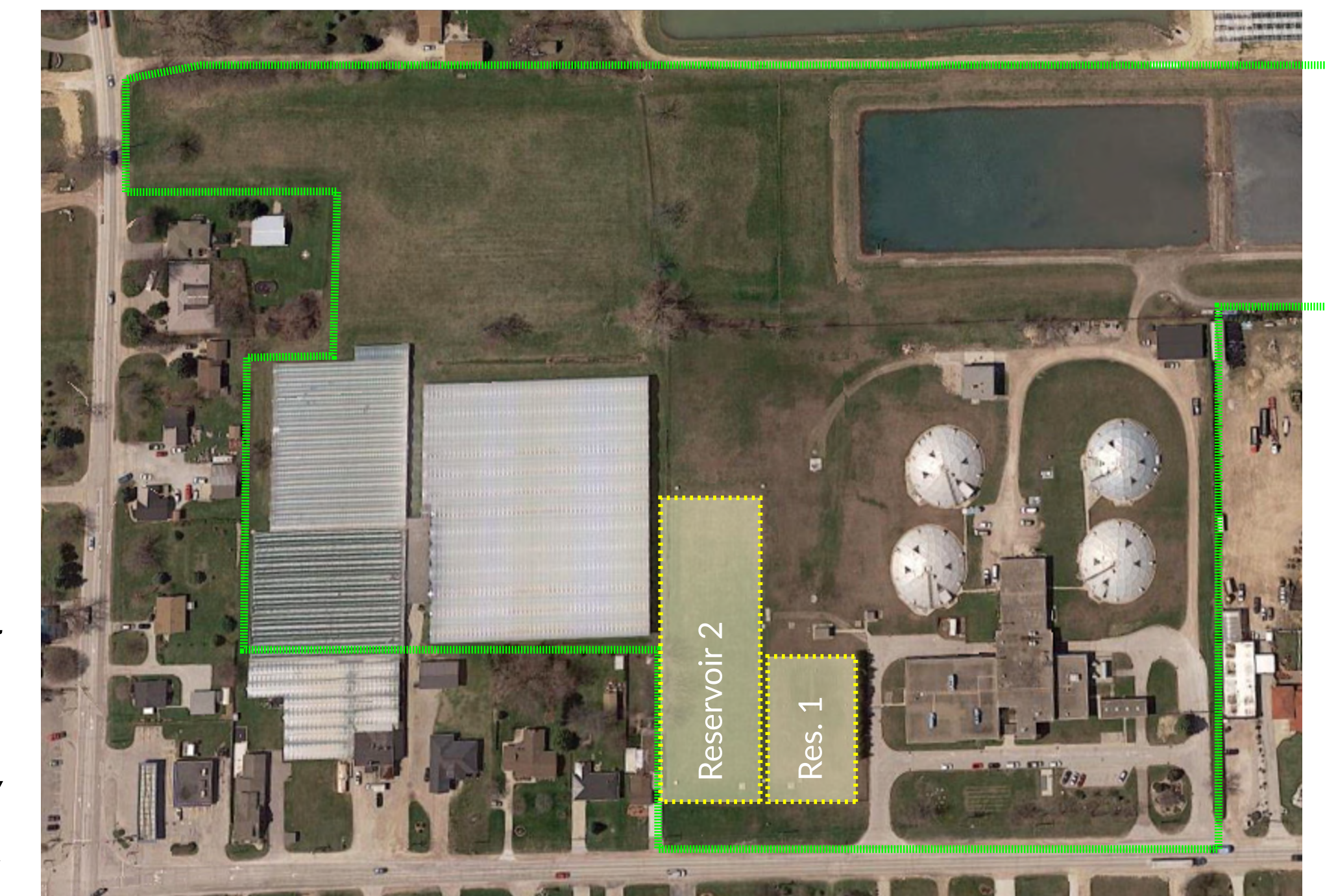
## PROJECT SCOPE

Incorporate an additional 30 million litres of on-site WTP storage capacity via the installation of a new reservoir (Reservoir No. 3) and a new transfer pumping station (TPS)



Ruthven  
Treatment  
Plant Site  
Boundaries

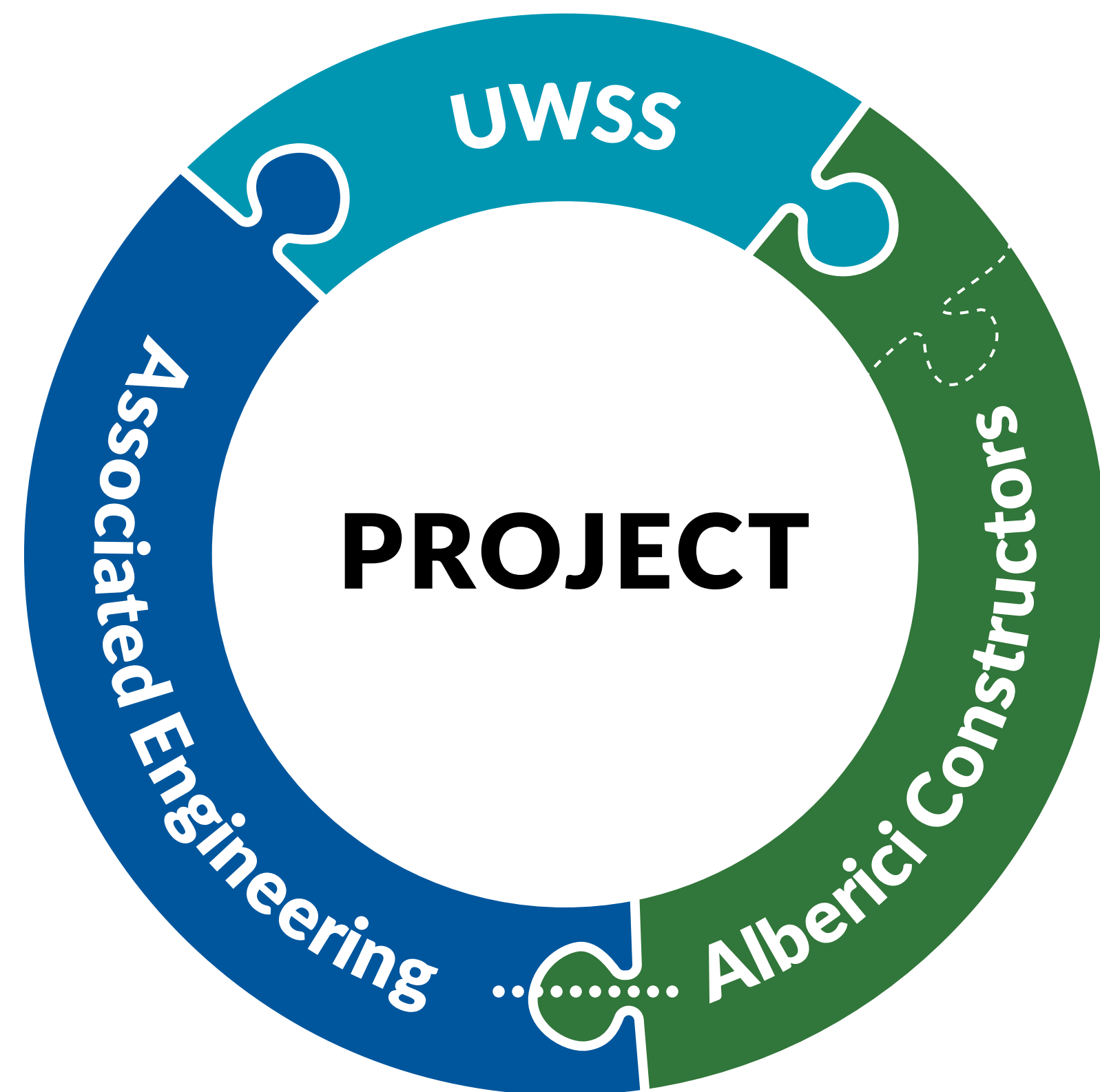
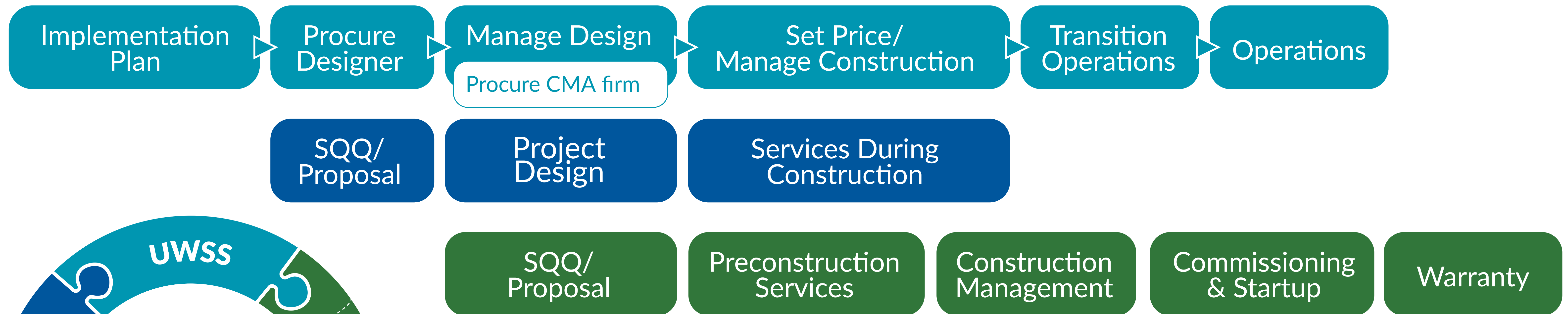
Image © CNES /Landsat and Google Earth



The two existing  
reservoirs provide an  
on-site storage capacity  
of 26 million litres



## COLLABORATIVE DELIVERY APPROACH



- Contractual Relationship
- Contract Amendment for GMP or fixed price
- Embedded Relationship

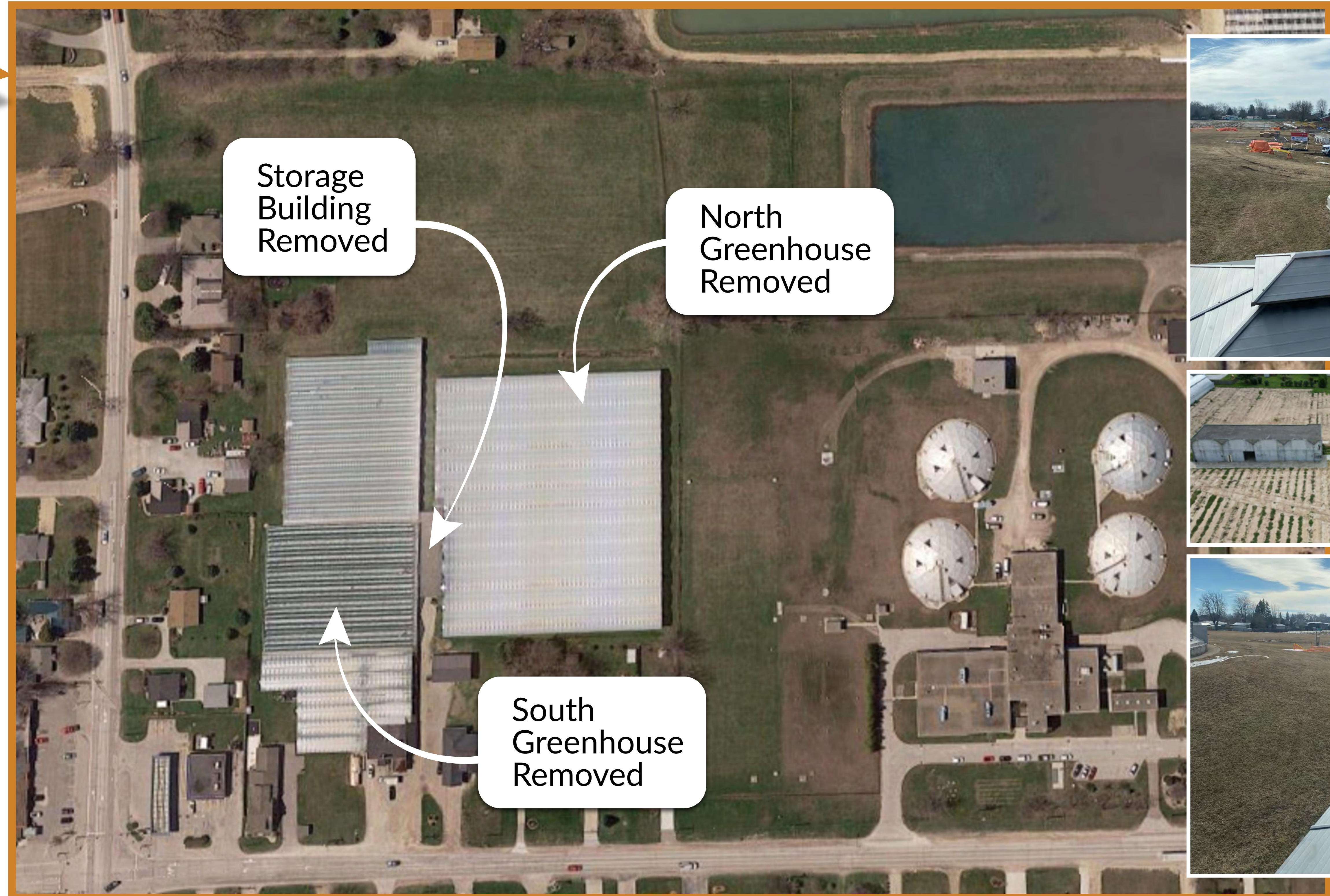
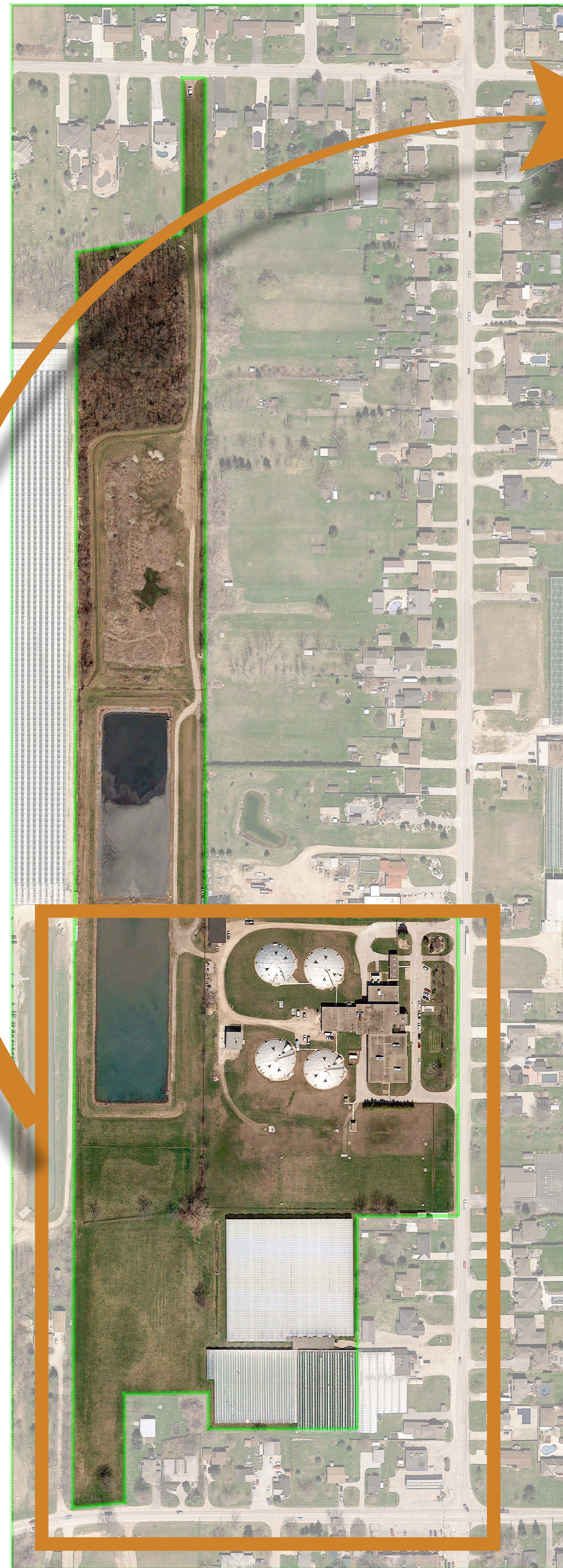
Construction Manager as Advisor (CMA) delivery method is being followed

### Benefits:

- Fast-tracked schedule
- Collaborative design process
- Strong project cost control

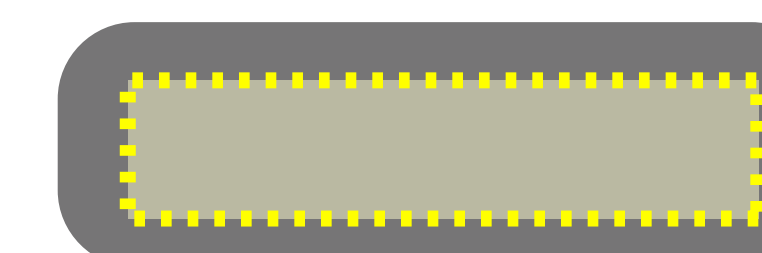
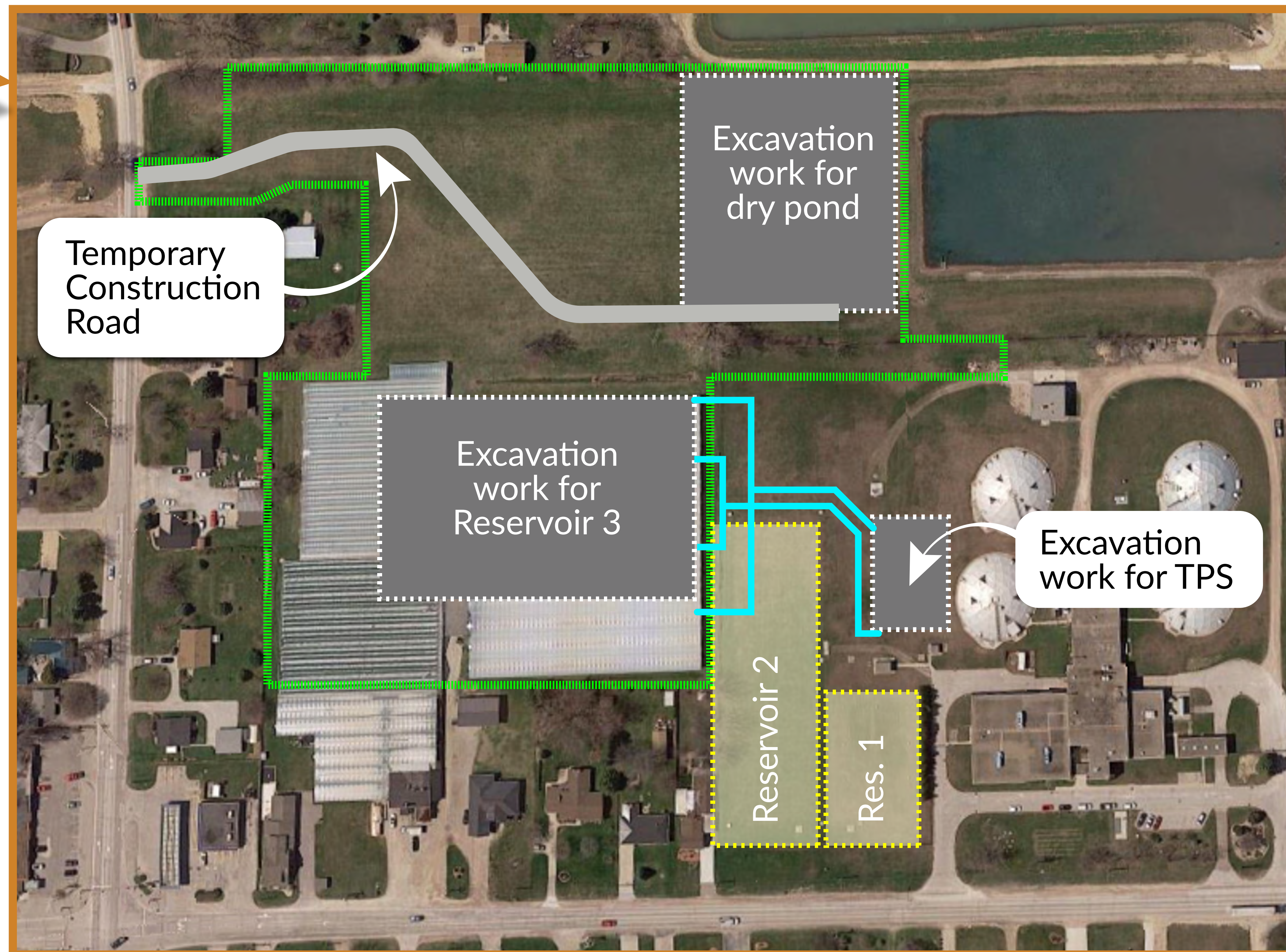
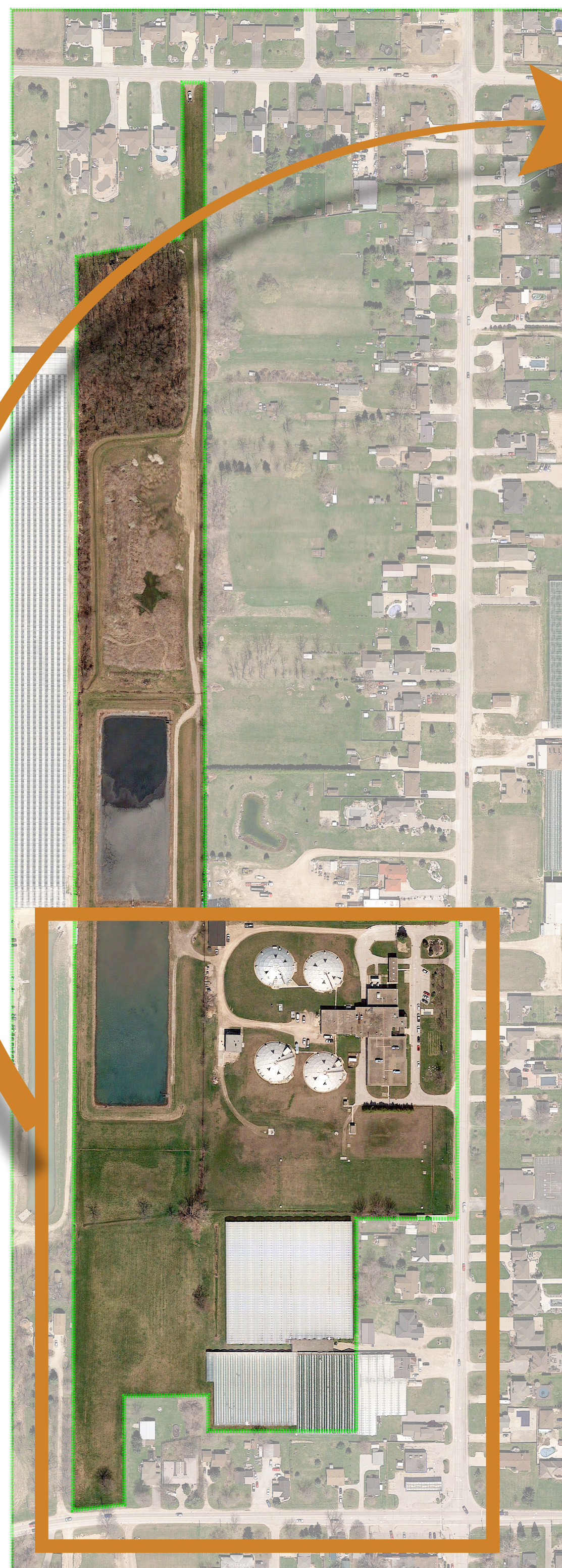


## PHASE 1: DEMOLITION (work completed in Fall 2024)





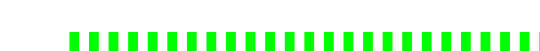
## PHASE 2: EARTHWORKS (March 2025 to January)



Underground  
Reservoir



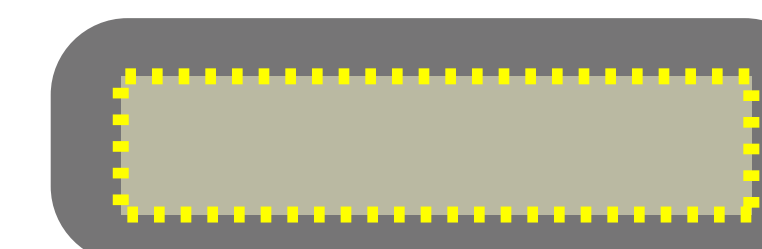
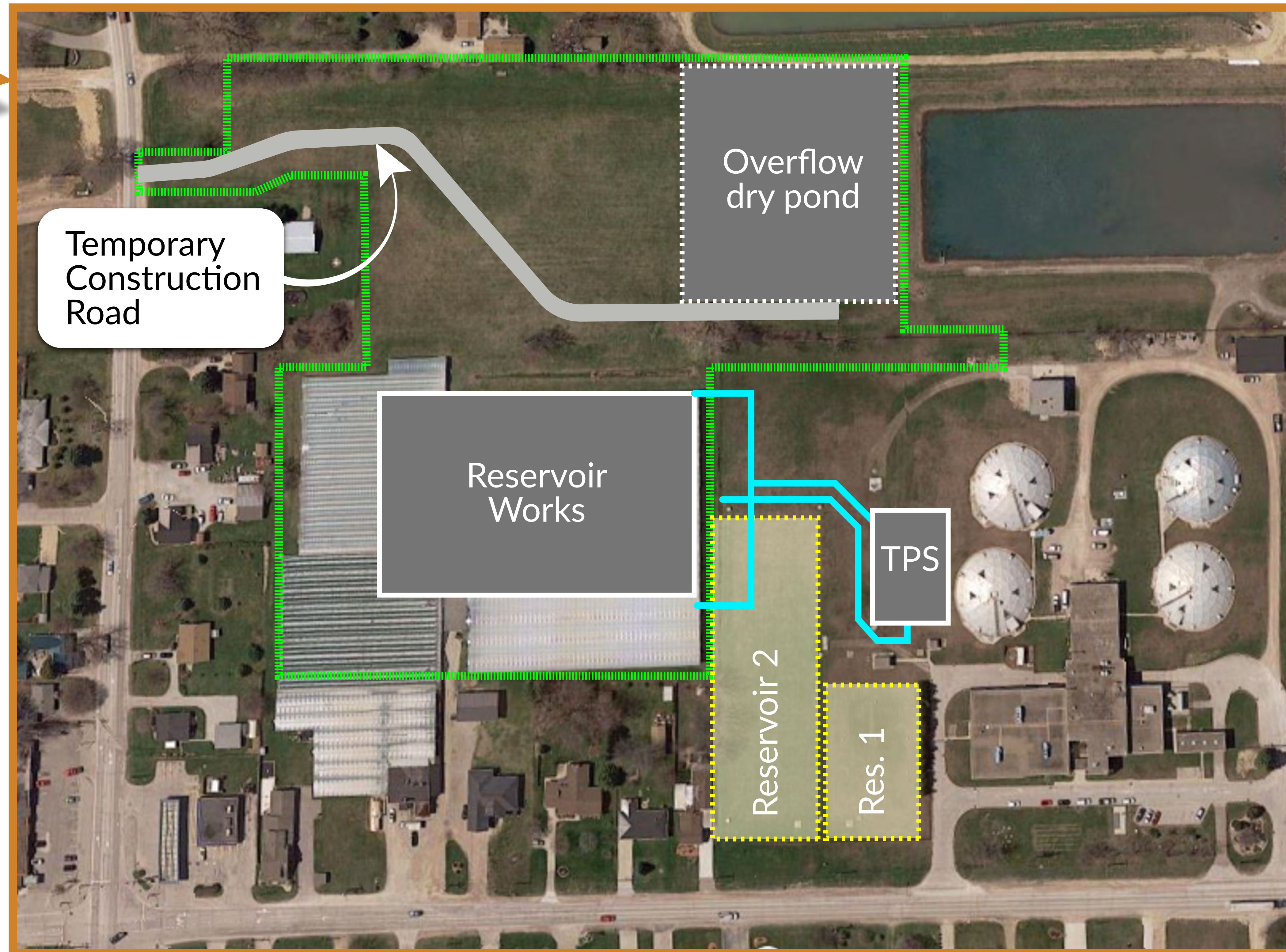
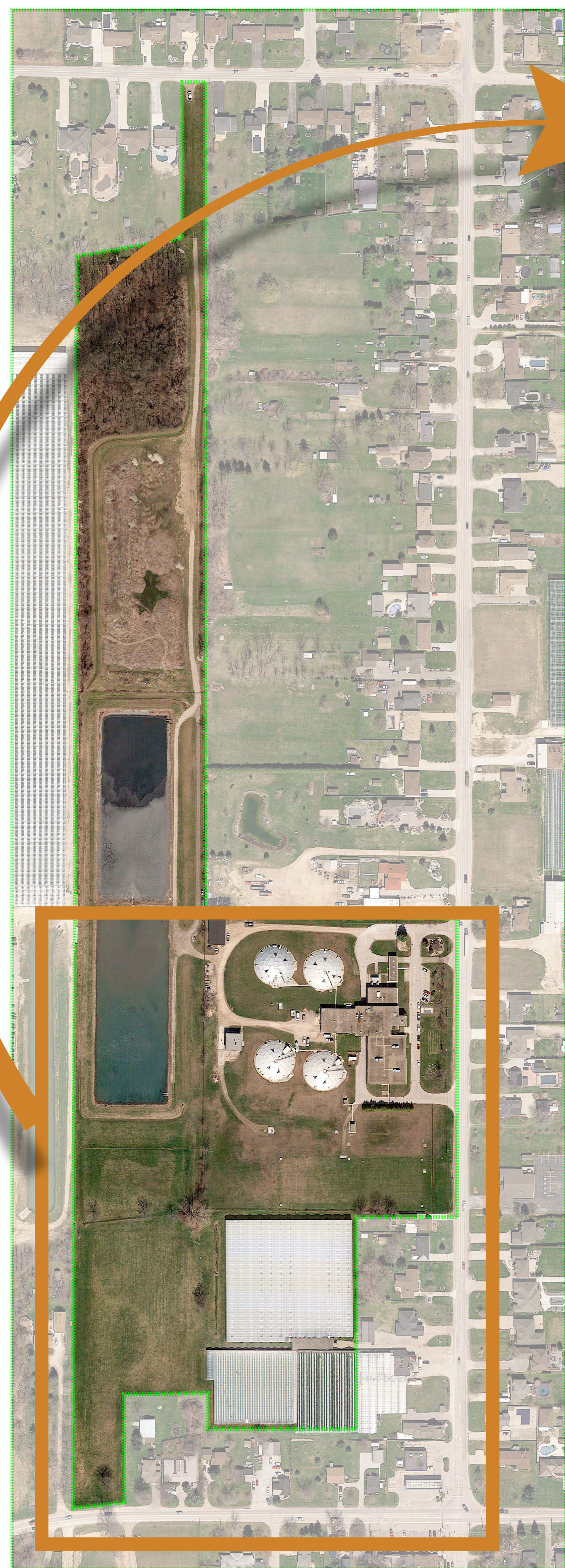
Buried  
Piping



Temporary  
Fencing



## PHASE 3: INSTALLATION WORKS (June 2025 to May 2026)



Underground  
Reservoir



Buried  
Piping



Temporary  
Fencing



